



Product Data: "Intake Vent"

The Intake Vent allows **fresh air** into the container to replace the air the exhaust vent has expelled. The intake is a passive vent installed at the opposite end of the container from the exhaust vent.

Physical Specifications -

Intake Vent: 13"L x 11 1/2" W x 4 1/2"H

Designed to mount under the structural roof beam.

Composite: Black Polycarbonate

3M® Mounting tape included

Bug Screen /3 Versions:

Flat Wall, Back Wall, and Side Wall- fine mesh coated aluminum screen

Screen air restriction is less than 10%

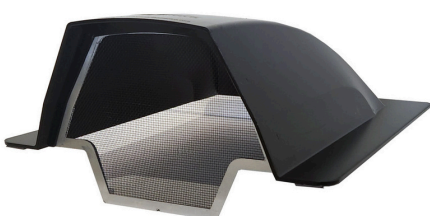
The back and side wall screens have approximately 30 sq. in. of screen area.

The flat wall screen has approximately 24 sq. in. of screen area.

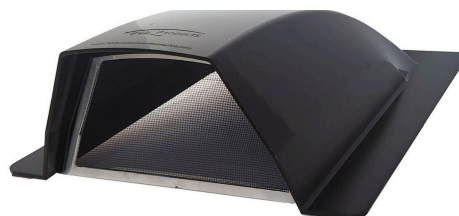
Port Cut Out: Recommend a cut- out of 8" x 8"x 2" below the upper structural cross bar. Inside the container the cut out will be visible; we suggest the metal edges be cleaned off to eliminate sharp or ragged edges. If you choose, painting the cut out edges leaves a better looking finish and less chance of oxidation.

Air flow Specifications and Vent Location-

Being a passive vent, the intakes airflow specifications are dependent on the DRY-CON X® "Exhaust Drivers" performance. With a larger cut out than the port opening there is a minimum amount of restrictions until exceeding the 50-60 cfm rating. The large cut-out of 64 sq. in. also assists if the opening is partially blocked by products stored, or if a filter system is installed. On a 20 foot container one intake is usually sufficient to allow for good cross flow ventilation. On a 40 foot container or high cube, two intakes are necessary to properly feed the exhausts on the far end.



Back Wall Intake



Flat Wall Intake



Side Wall Intake